

The background of the image is a stylized American flag, with the stars in the upper left and the stripes in the lower right. The OSHA logo is centered in the upper half. The 'O' is a large, 3D-style letter with a blue ring and a grey center. The 'SHA' are white, serif letters with a slight shadow. A registered trademark symbol (®) is located to the upper right of the 'A'.

**OSHA<sup>®</sup>**

**Occupational Safety  
and Health Administration**

# Construction Safety in New York City Calendar Year 2021

**Kay Gee**

Area Director

Department of Labor – OSHA

Manhattan Area Office



# Disclaimer

This information is intended to assist employers, workers, and others improve workplace health and safety. While we attempt to thoroughly address specific topics, it is not possible to include discussion of everything necessary to ensure a healthy and safe working environment in this presentation. This information is a tool for addressing workplace hazards, and is not an exhaustive statement of an employer's legal obligations, which are defined by statute, regulations, and standards.

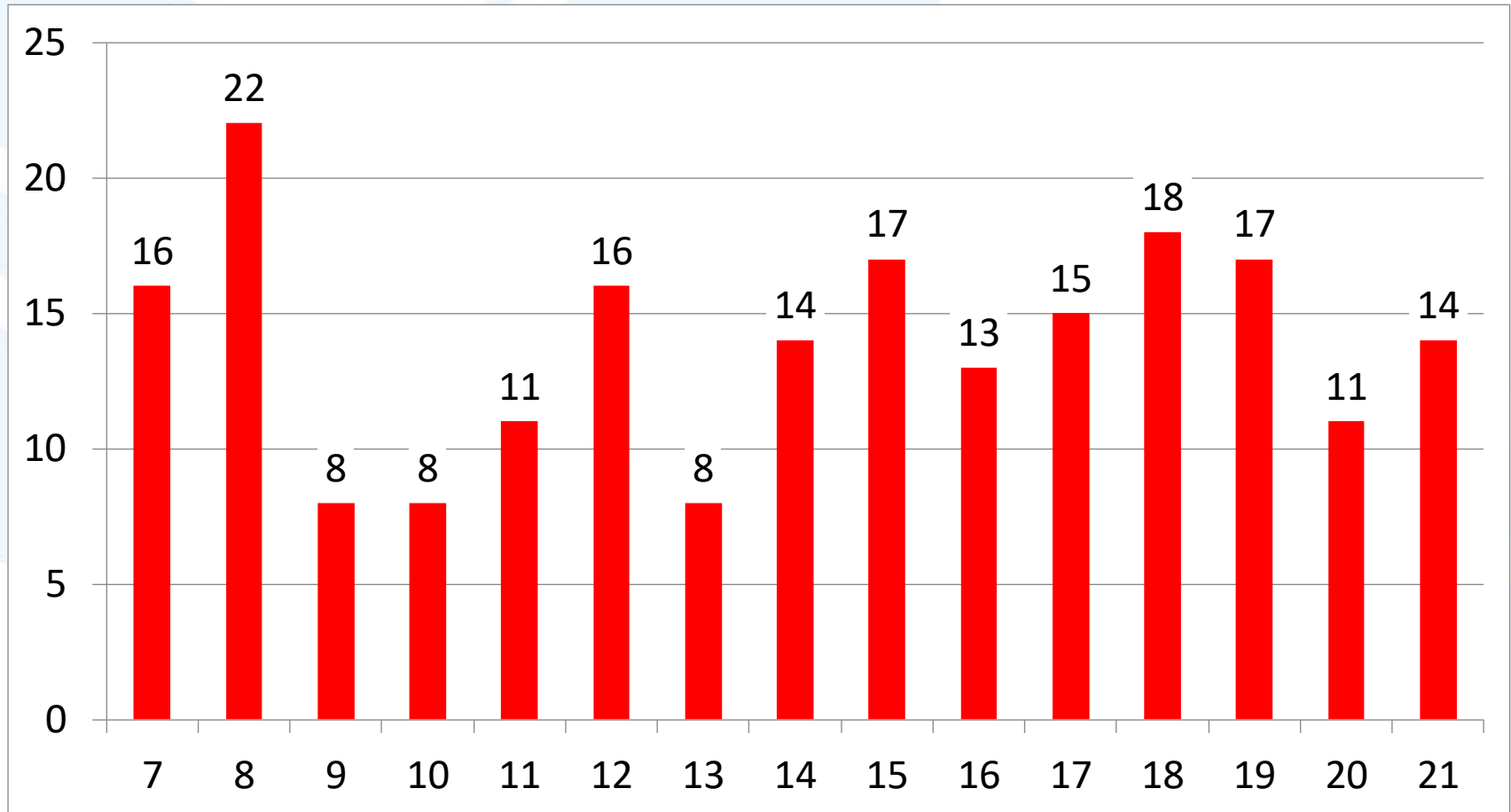


# Disclaimer

This document does not have the force and effect of law and is not meant to bind the public in any way. This document is intended only to provide clarity to the public regarding existing requirements under the law or agency policies. It does not create (or diminish) legal obligations under the Occupational Safety and Health Act. Finally, OSHA may modify rules and related interpretations in light of new technology, information, or circumstances; to keep apprised of such developments, or to review information on a wide range of occupational safety and health topics, you can visit OSHA's website at [www.osha.gov](http://www.osha.gov).



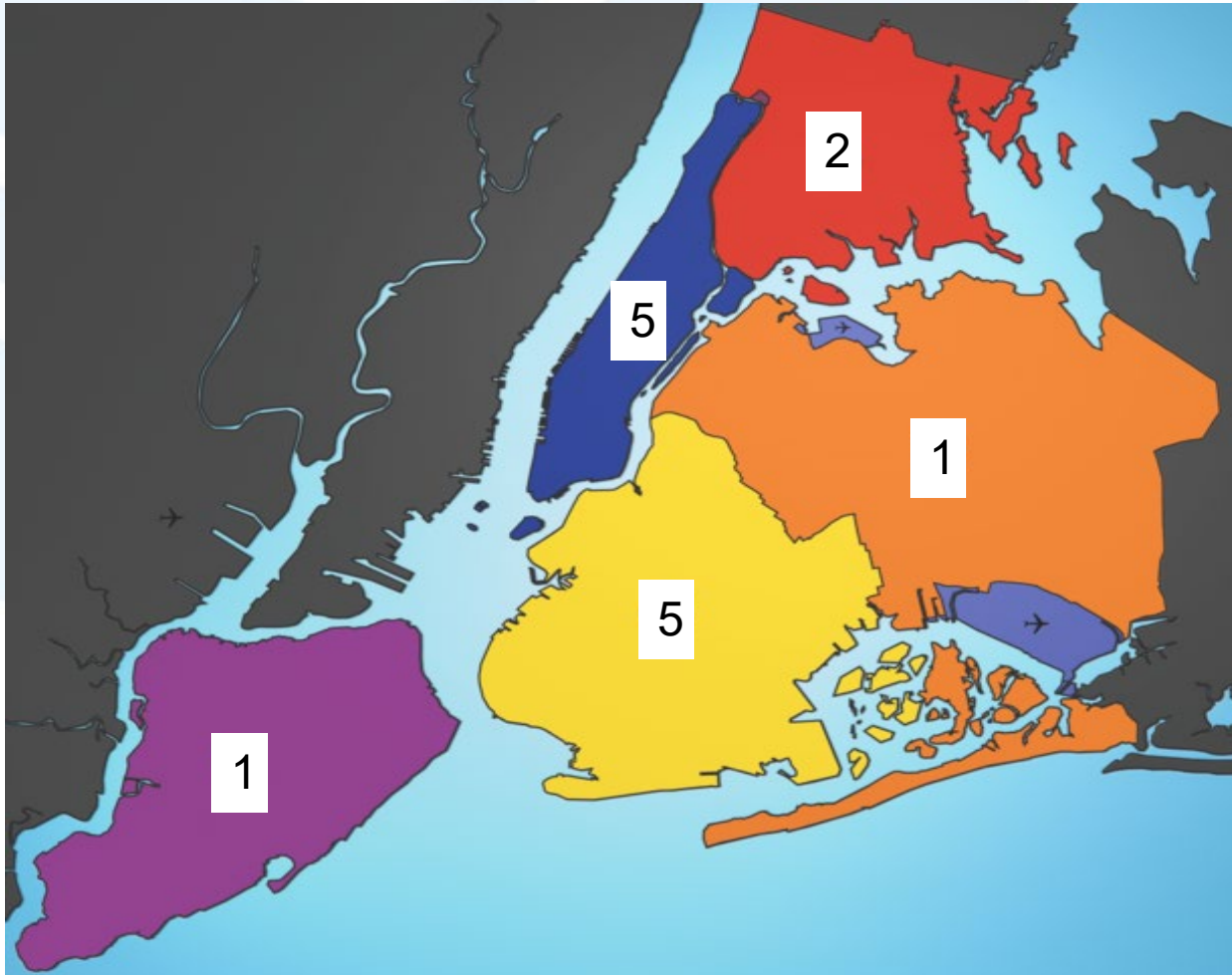
# Construction Fatalities 2007-2021



OSHA data for New York City (5 boroughs) by  
Calendar Year (January 1<sup>st</sup> to December 31<sup>st</sup>)  
2020

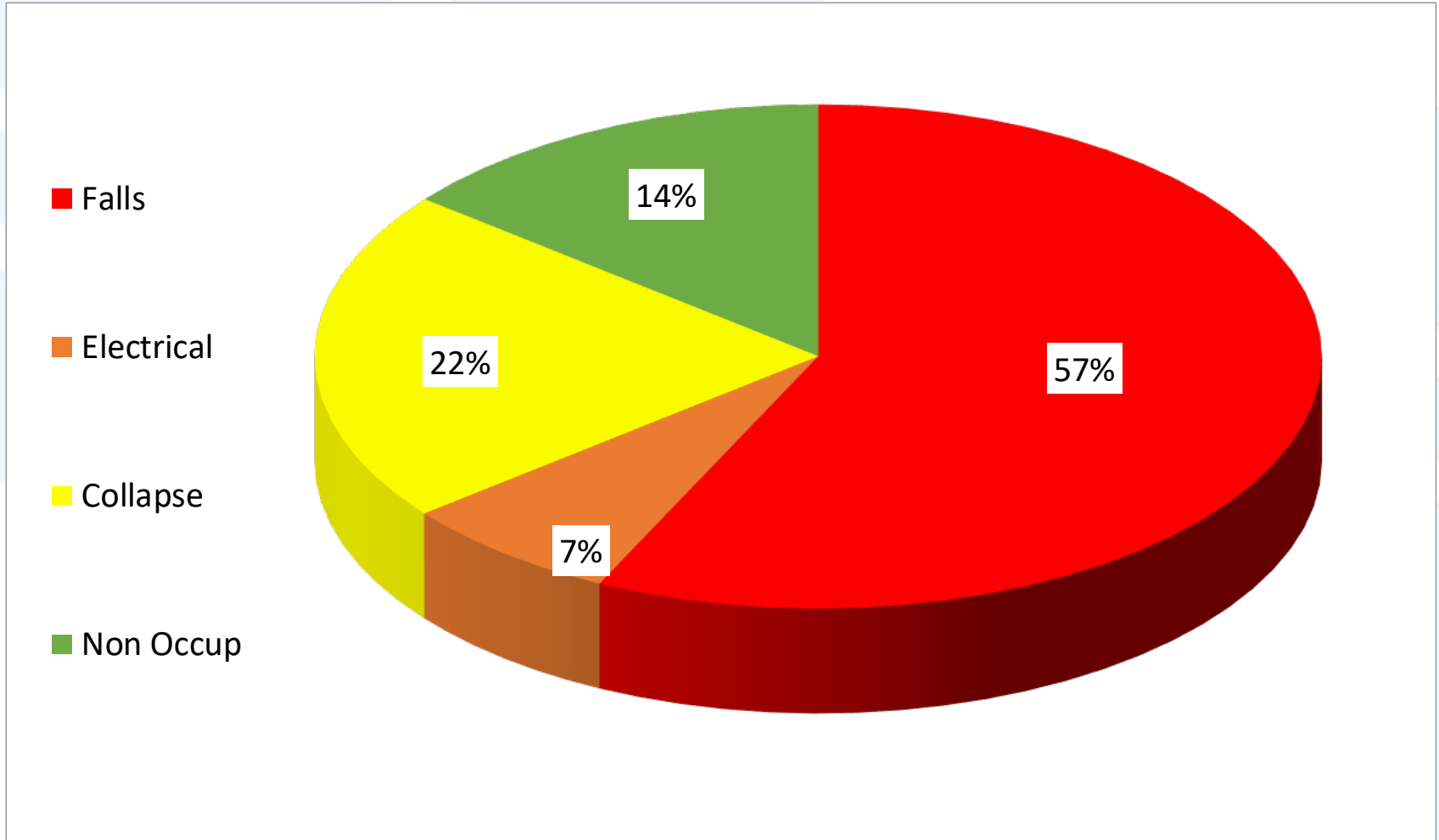


# Construction Fatalities by Borough 2021



- 5– Manhattan
- 5 – Brooklyn
- 2 – Bronx
- 1 – Staten Island
- 1 - Queens

# Construction Fatalities by Type 2021



# Construction Fatalities Trends in 2021

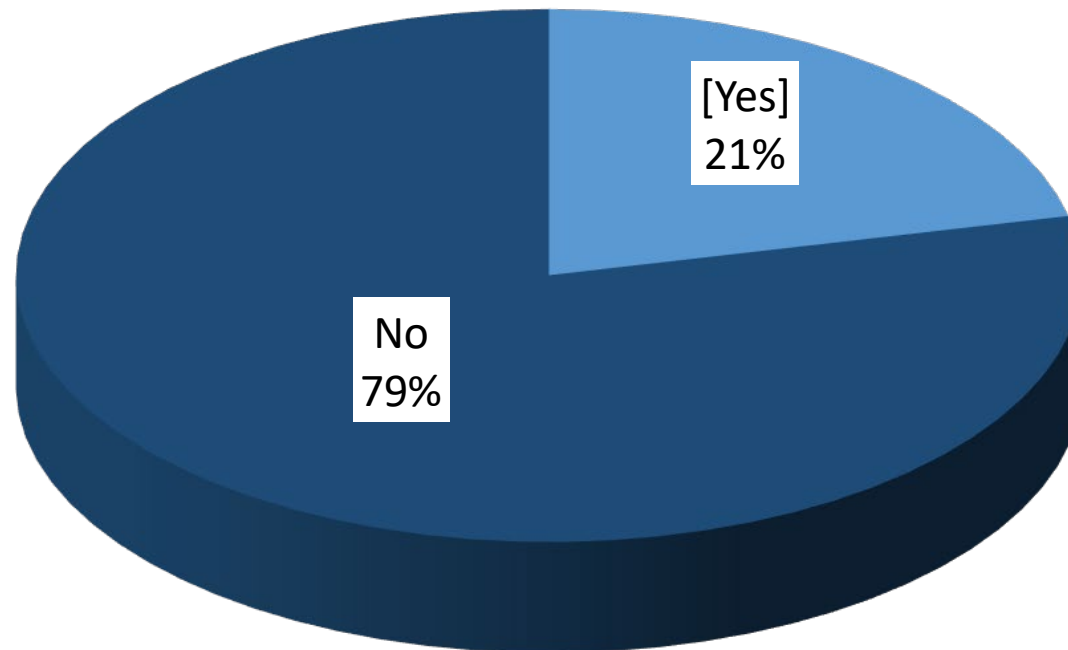
- 14 total fatalities:
- 8 fatalities involved falls
  - 3 falls from edge/shaft
  - 3 involving a scaffold
  - 1 from ladder
  - 1 from roof
- 1 fatalities involved contact Energized Parts
- 2 fatalities at sites were Non-Occupational Related instances
- 3 fatalities involved collapse
  - 1 through walking/working surface, demolition activities - led to fall
  - 2 elevator collapse



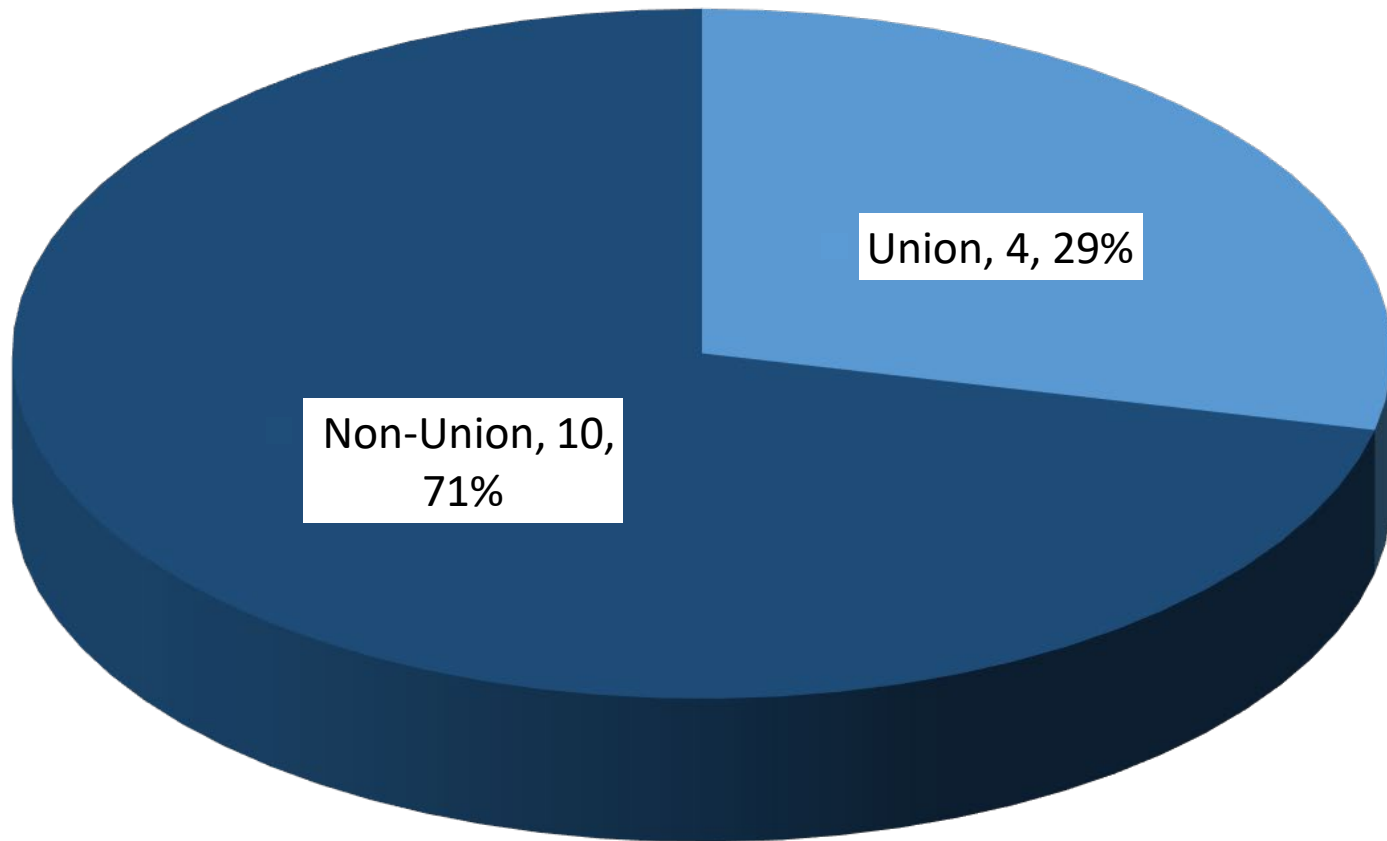


# Construction Fatalities Coded for “Imm-Lang” 2021

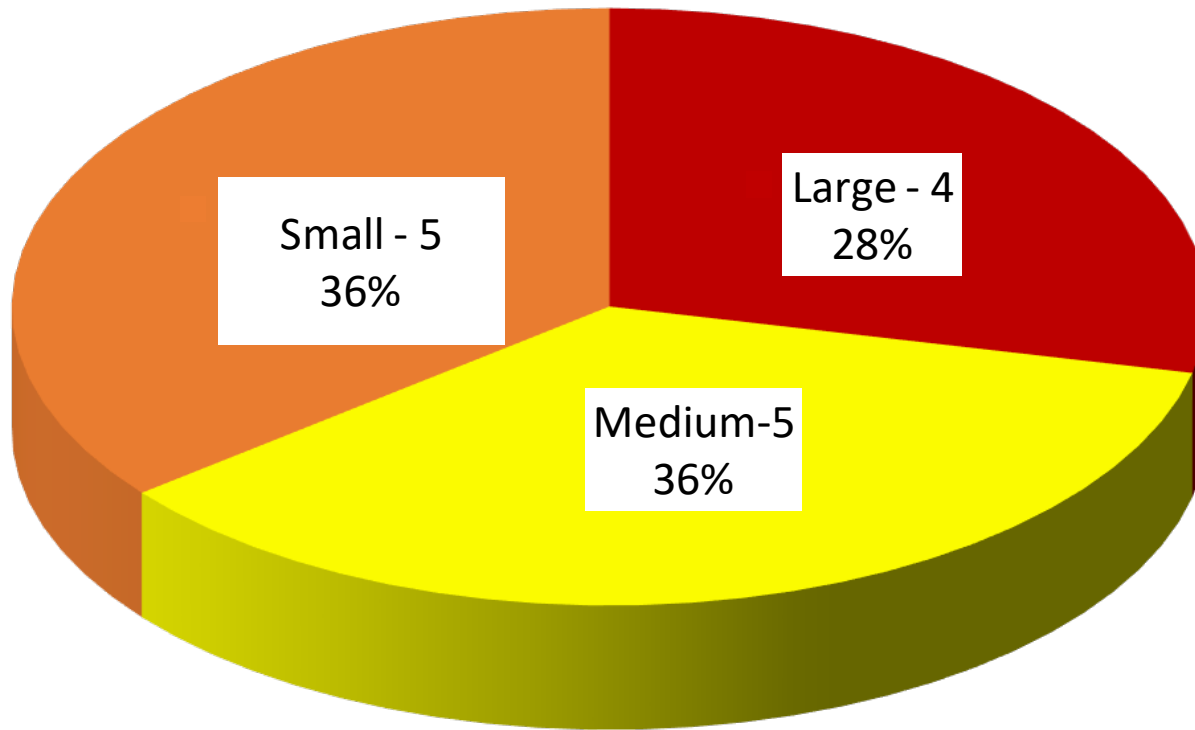
Immigration or Language factors



# Construction Fatalities by Union Status 2021

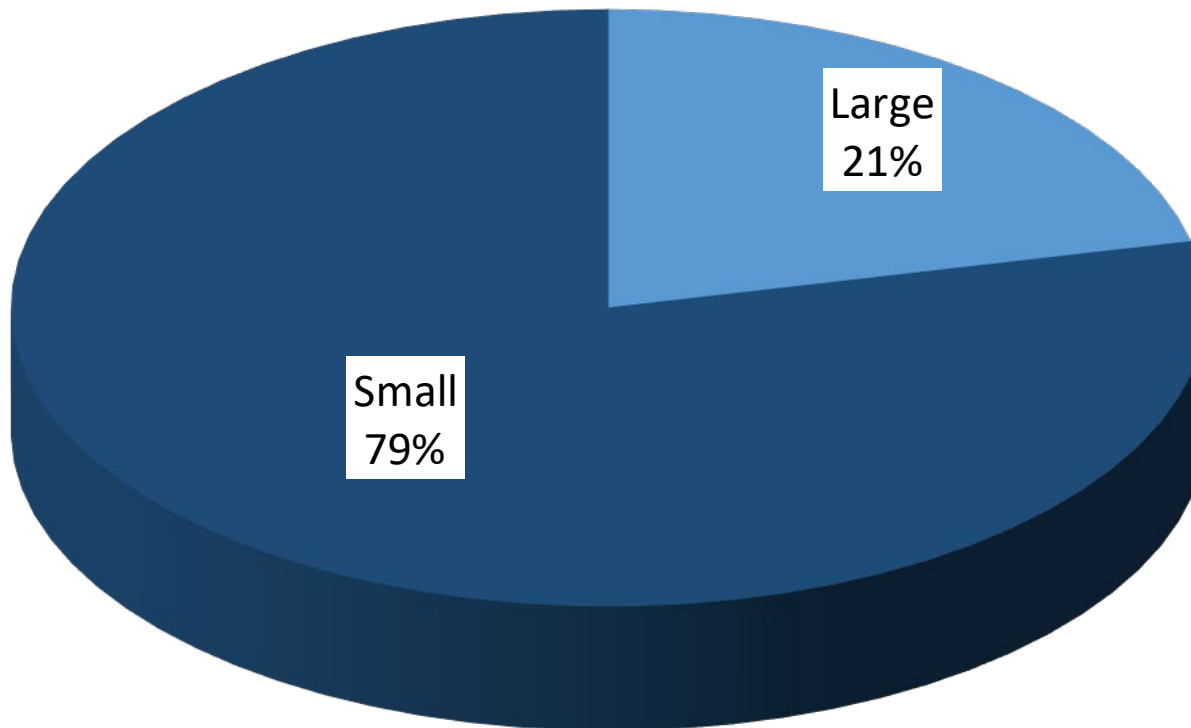


# Construction Fatalities by Company Size in 2020



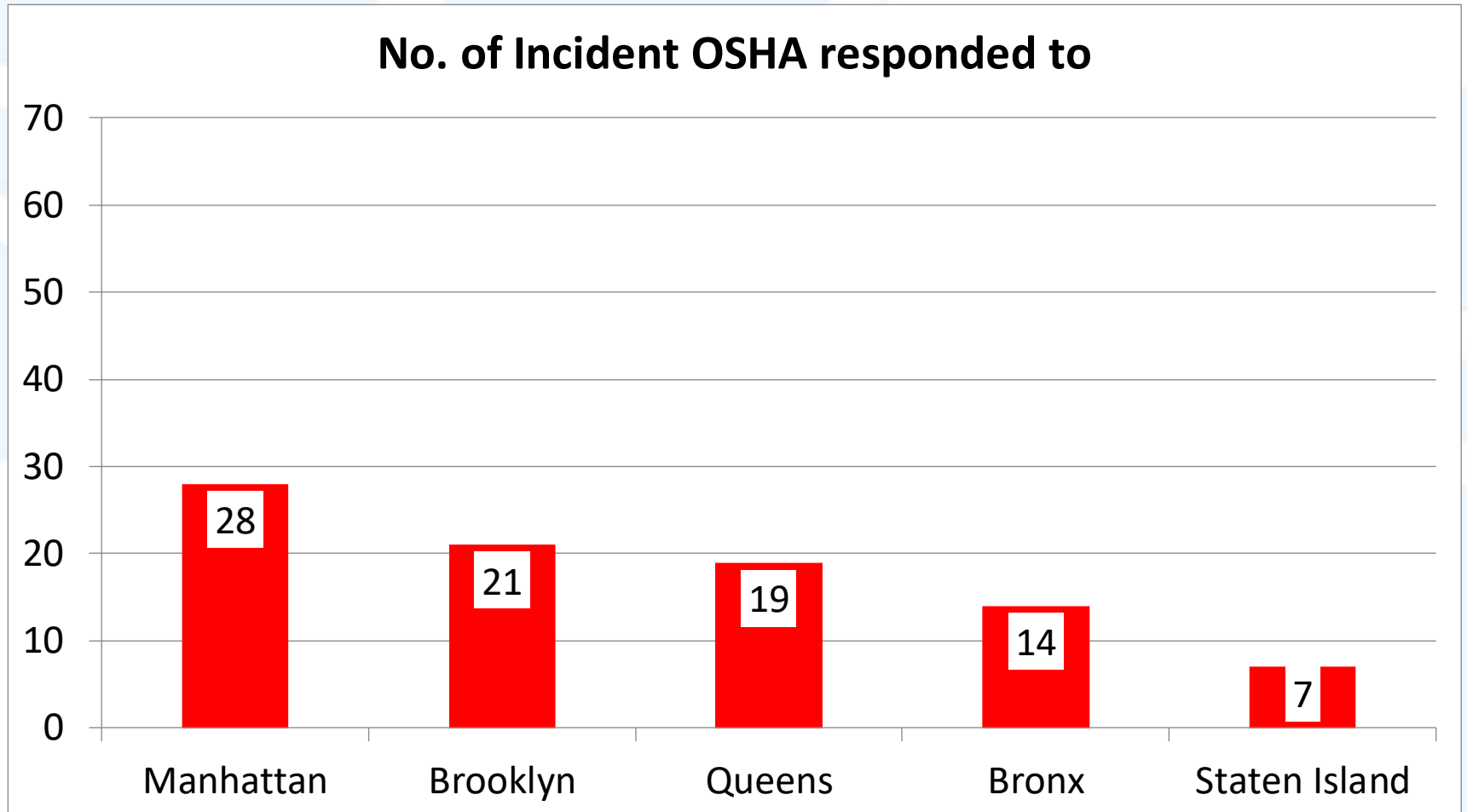
Small Employer (30 or less employees)  
Medium Employer (30 – 100 employees)  
Large Employer (100 or more employees)

# Construction Fatalities by Worksite Size in 2021



Small worksite (below 10 stories)  
Large worksite (10 stories and above)

# Construction Incidents by Borough 2021



# OSHA Construction Enforcement 2021

- 460 Construction Inspections – 5 boroughs
  - 38% Un-Programmed Inspections
- Violations Issued
  - 464 Serious/Willful/Repeat Citations Issued
    - 445 Serious/10 Willful/9 Repeat
  - 17 Other-Than-Serious Citations Issued
  - Approximate Penalties of \$3.1 Million



# OSHA Total Enforcement 2021

- 645 Total Inspections – 5 boroughs
  - 50% Un-Programmed Inspections
  - 71% Construction Inspections
- Violations Issued
  - 443 Serious/ 11 Willful/ 12 Repeat Citations Issued
  - 50 Other-Than-Serious Citations Issued
  - Approximate Penalties of \$3.8 Million



# OSHA Non-Construction Fatalities 2021

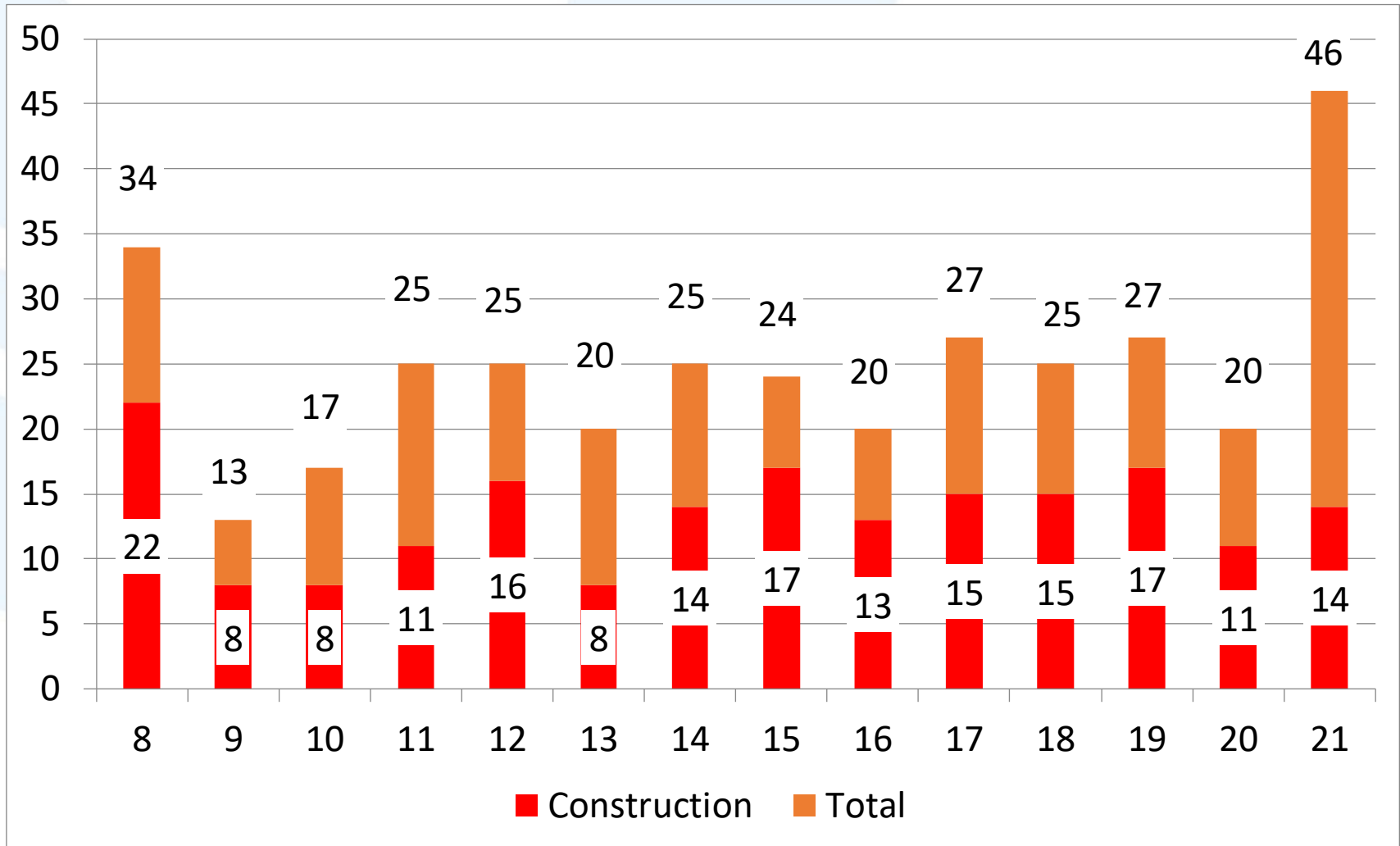
## 32 Fatalities in non-construction activities in NYC

- 9 Manhattan, 10 Brooklyn, 9 Queens, 0 Bronx, 4 SI
  - 2 fatalities involved crushed/caught in
  - 3 fatalities involved struck-by vehicles/equipment
  - 4 fatalities involved falls
  - 5 fatalities involved Workplace Violence
  - 8 fatalities involved COVID
  - 2 fatalities involved slip/trip
  - 2 fatalities involved Electrical contact
  - 1 fatality involved a fire
  - 5 fatalities were Non-Occupational Related





# Total Fatalities 2008-2021



OSHA data for New York City (5 boroughs) by  
Calendar Year (January 1<sup>st</sup> to December 31<sup>st</sup>)  
2021 - COVID 19 Fatalities included



The image features the OSHA logo prominently in the center. The logo consists of a stylized 'O' with a blue and white circular design inside, followed by the letters 'S', 'H', and 'A' in a white, serif font. A registered trademark symbol (®) is located to the upper right of the 'A'. The background is a close-up of the American flag, showing the stars and stripes in a slightly blurred, high-contrast manner.

**OSHA<sup>®</sup>**

**Occupational Safety  
and Health Administration**